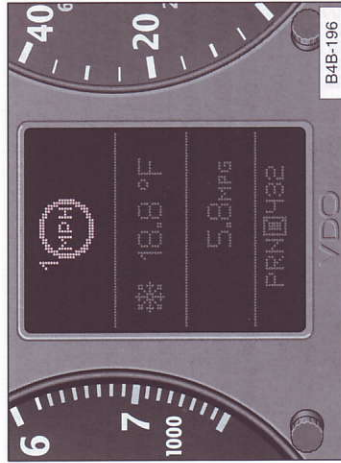


Speed warning



You can store a road speed which is not to be exceeded. As soon as you exceed that speed by approximately 6 miles (10 kilometers), a warning tone sounds and "MPH" ("km / h") appears in the display.

Note

Always monitor the vehicle speed by means of the speedometer. The speed warning device may only be used as a reminder not to exceed the posted speed limit.

The following describes how to store or delete **speed warnings 1 and 2**.

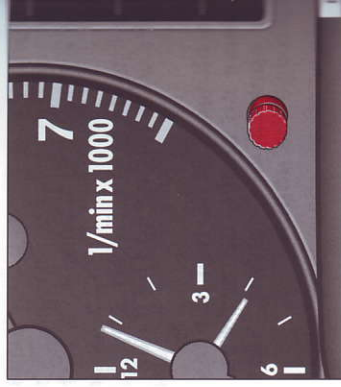
Speed warning 1

The "MPH" ("km / h") disappears when you reduce the speed below the stored speed. Also, the "MPH" goes out when the driving speed increases approximately 25 mph (40 km / h) over the set speed for at least 10 seconds. The stored speed is not deleted.

Selecting speed limit

Press the test button for the Auto-Check control briefly when the desired speed is indicated on the speedometer. The speed warning symbol lights up when the button is released to confirm that the selected speed has been stored.

The set speed limit remains stored until another speed is selected by pressing the button again or until the memory is cleared.



Cancelling speed limit

Press the test button for at least 1 second when the vehicle is moving at a speed above 3 miles (5 km / h). The display shows the warning symbol crossed out to confirm that the speed limit has been cleared.

Speed warning 2

When the ignition is switched off, the driver can store a **permanent speed limit warning** in the unit.

The warning is shown in the display as described above. The warning symbol only goes out once the road speed has fallen below the stored value again.

We recommend that you store this speed limit warning if you wish to be reminded of a particular speed limit in addition to speed limit warning 1. (For instance when driving in countries with general speed limits or if a particular speed should not be exceeded when winter tires are fitted, etc.)

Selecting speed limit

- Press the test button briefly with the **ignition switched off**. The mileage recorder display will then light up.
- Press the test button again and hold for at least 2 seconds. The speed limit currently set appears in the display.



- To change the speed limit, press the top or bottom of the function selector switch for the trip computer (see arrow illustration). The speed limit displayed will then increase or decrease by 6 miles (10 km / h) at a time.
- A few seconds after the button is released, the display lighting goes out again.

Cancelling speed limit
Press the test button briefly **with the ignition switched off**; the display will light up. Press the test button again for at least 2 seconds: the display will show the speed limit currently set. Now press and hold the "Reset" button for the trip computer until the crossed-out warning symbol appears.